

Compensated High Current Choke, 1-phase

**Description**

- Current compensated choke
- 1-phase choke
- Wire leads
- Flange for mounting onto printed circuit board
- Fully potted resin

Standards

- EN 60938
- IEC 60950
- EN 55011/55014
- VDE 0871/0875

Applications

- Placed in front of frequency converter
- Stepper motor drives
- UPS-systems
- Inverter

References

[General Product Information](#)

Weblinks

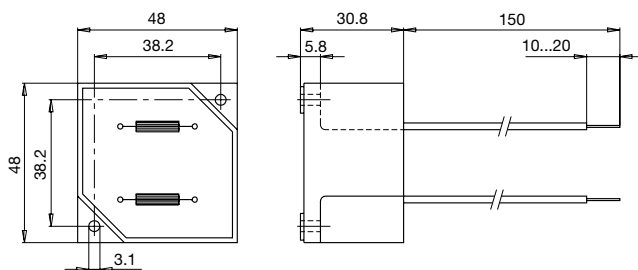
[Approvals](#), [RoHS](#), [CHINA-RoHS](#), [e-Store](#), [SCHURTER-Stock-Check](#), [Distributor-Stock-Check](#)

Technical Data

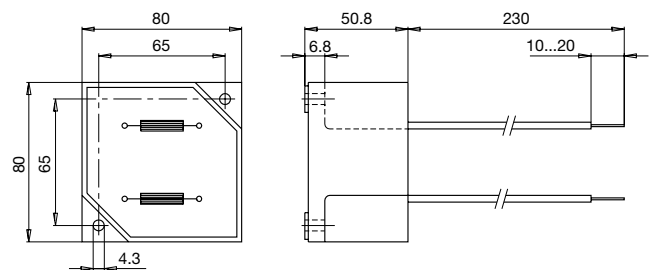
Rated Voltage	up to 540 VAC	Test Voltage	2.5 kV, 50 Hz, 2 sec, winding to winding
Rated Voltage	up to 760 VDC	Isolation Voltage	2.5 kV, 50 Hz, 2 sec, winding to ambient
Rated Current	10 - 50 A @ Ta 40 °C	Climatic Category	25/100/21 acc. to IEC 60068-1
Rated inductance	1.1 - 12 mH, Tol. -30% +50%	Allowable Operation Temp.	-25 °C to 100 °C
Power Operating Frequency	50 - 400 Hz		
Terminal technic	Flexible wire		
Weight	145 - 1865 g		
Material: Housing	UL 94V-0		
Sealing Compound	UL 94V-0		

Dimensions

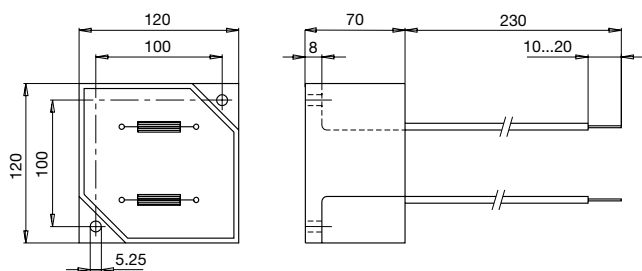
Case 29-2W



Case 31-2W



Case 33-2W



Variants

[Distributor-Stock-Check](#) | [SCHURTER-Stock-Check](#) | [e-Store](#)

I_n [A]	L_n [mH]	R_{cu} [mΩ]	P_{loss} [W]	f_{RES} [MHz]	Copper ϕ [mm]	Weight [g]	Case	Packing unit [pcs.]	Order Number
10	5	18	3.6	0.35	1.25	145	29-2W	6	DKIP-0229-1005
10	12	40	8	0.15	1.25	477	31-2W	2	DKIP-0231-1012
15	2	8	3.6	0.6	1.6	145	29-2W	6	DKIP-0229-1502
15	5	17	7.6	0.33	1.6	525	31-2W	2	DKIP-0229-1505
20	1.1	6	4.8	2.5	1.8	145	29-2W	6	DKIP-0229-2001
20	3	10	8	0.55	1.8	506	31-2W	2	DKIP-0231-2003
30	5	12.5	22.5	0.26	2.24	1600	33-2W	1	DKIP-0233-3005
40	3	6	19.2	0.3	1.5 x 4.5	1830	33-2W	1	DKIP-0233-4003
50	2	5	25	0.25	1.5 x 4.5	1865	33-2W	1	DKIP-0233-5002